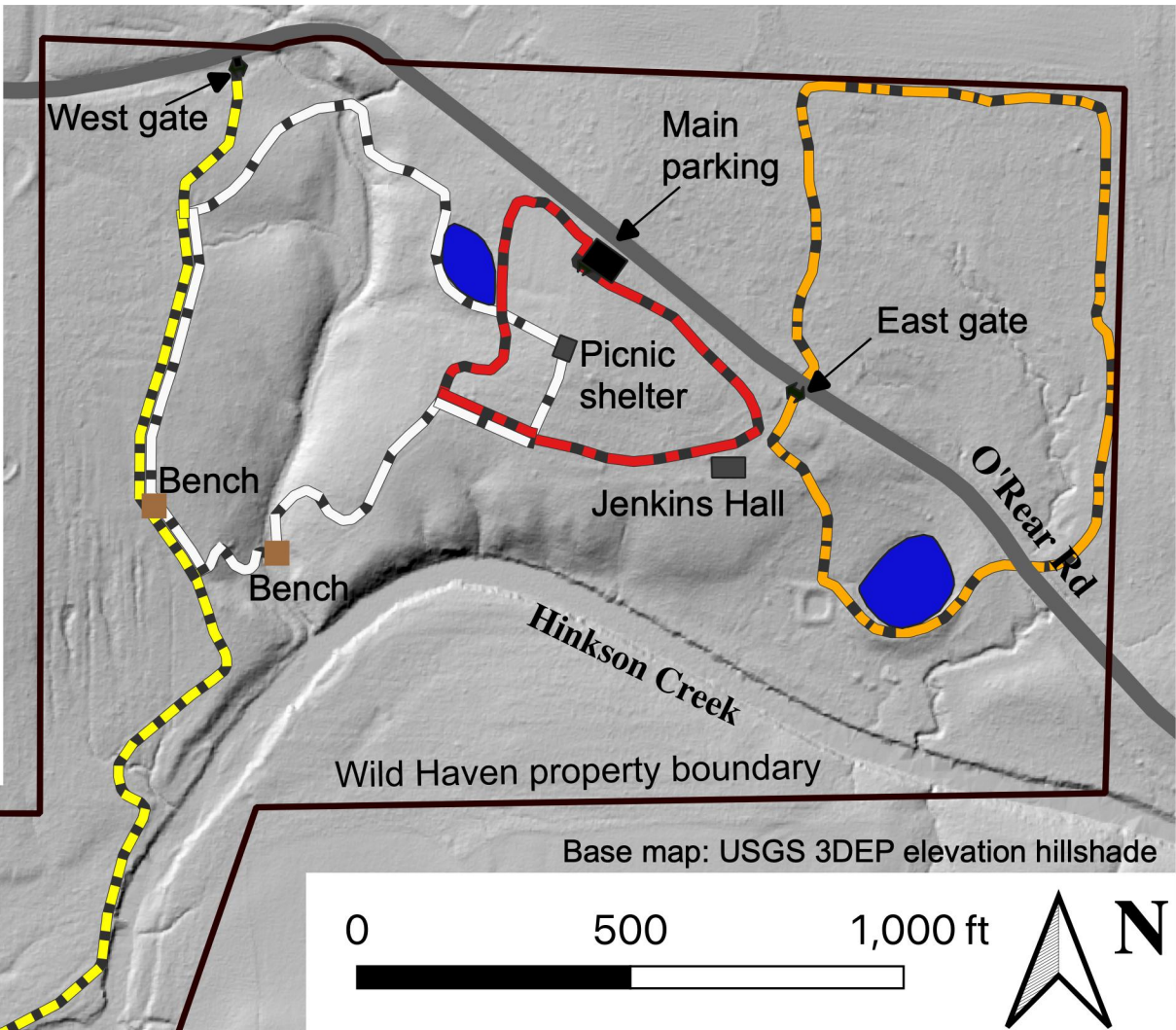


Wild Haven Nature Area

~100 Acres
6900 E. O'Rear Road

Trails

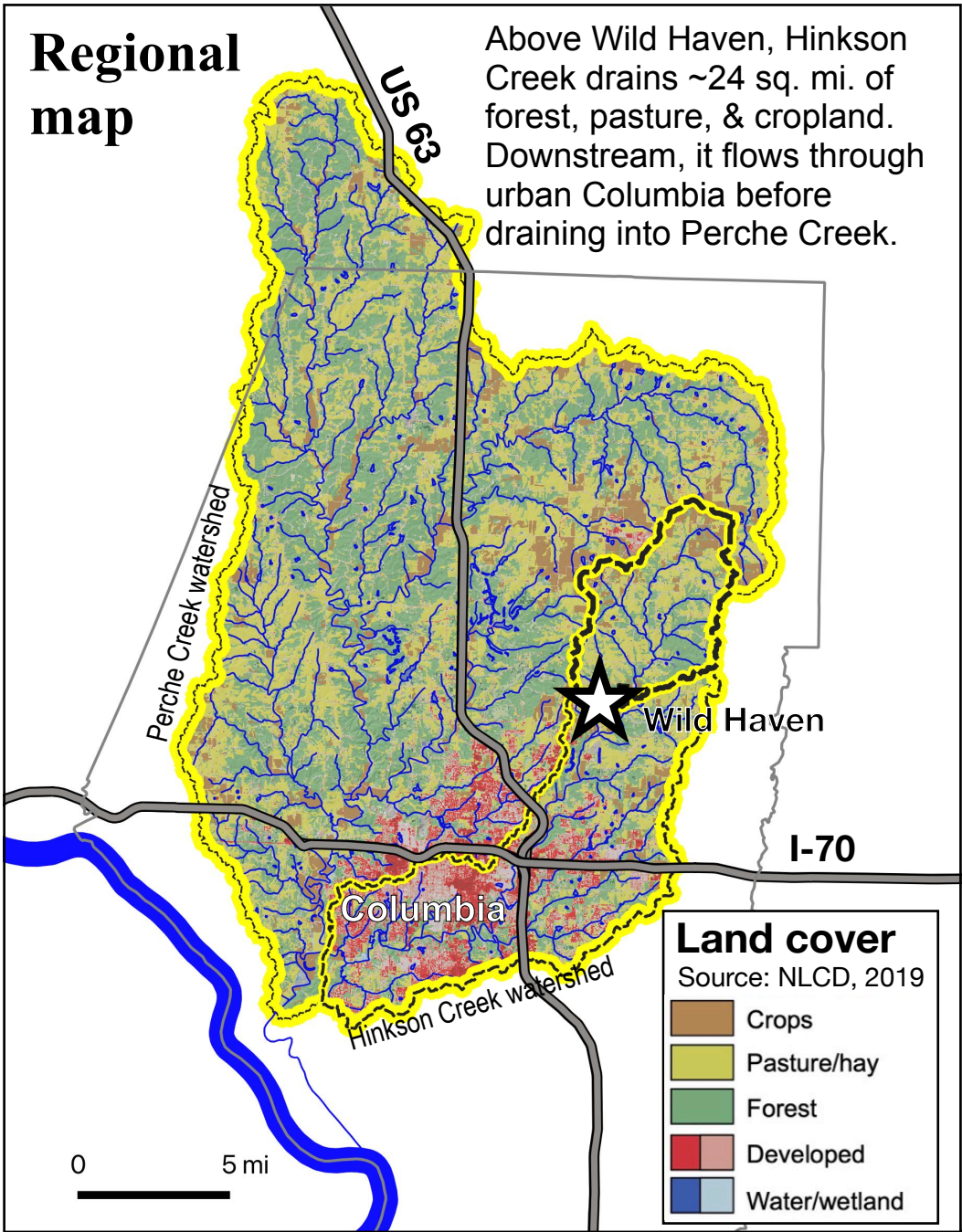
Yellow (one-way)	1.0 mile	
White (loop)	0.5 mile	
Red (loop)	0.3 mile	
Orange (loop)	0.6 mile	



Trail Summary

	Habitats	Difficulty	Notes
Yellow	Oak woodlands, bottomland forest, riparian corridor, meadow	Moderate	From main parking area, access is via the white trail. Or begin at west gate.
White	Oak woodlands, small creek, meadow, small pond, restored savanna, sandstone glade	Moderate	Crosses a stream bed that is often dry. Do not attempt to cross during high water.
Red	Second-growth forest, restored savanna, mowed lawn	Easy	
Orange	Pond edge, mature forest, second-growth forest	Easy	Access via the red trail.

Regional map



Above Wild Haven, Hinkson Creek drains ~24 sq. mi. of forest, pasture, & cropland. Downstream, it flows through urban Columbia before draining into Perche Creek.

Columbia Audubon Society



Visit the website!
www.columbia-audubon.org



Learn about events
by email.
[www.columbia-audubon.org/
contact/email-list/](http://www.columbia-audubon.org/contact/email-list/)

Map by Joanna Reuter
www.ozarkoutsider.com
v. 1.0, March 2023

Citizen Science at Wild Haven

